

PV100

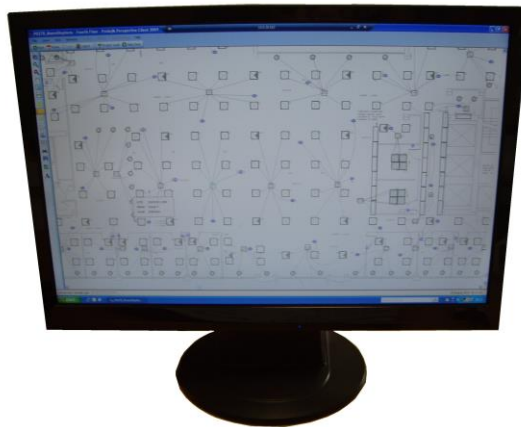
The **PV100** range of head end servers for use with Prolojik Perspective® Graphics

PV100 range comprising:

- PV101** 22" LED Flat Screen Monitor for Head End Server
- PV110** Head End Tower Server
- PV111** Head End Tower Server c/w RAID storage system
- PV112** Head End Tower Server c/w UPS, RAID storage system
- PV120** Head End Rack Mounted Server
- PV121** Head End Rack Mounted Server c/w RAID storage system

LonWorks Network Interface:

- U10** USB Network Interface



Specifications

PV101 Features

Philips 223V5LHSB2 22" Monitor (Or equivalent)
22" LED Flat Screen
Full HD (1080p) 1920 x 1080 at 60 Hz Max Resolution
HDMI, VGA Connections

PV110 Series Features

Lenovo Think Centre M83 PC (Or equivalent)
Intel® Core™ i5-4460S / 2.90GHz Processor
4GB Ram 2GB Cache Memory
500Gb Hard Drive
Windows 10 Professional 64-bit
DVD+RW
Mouse & Keyboard Included

PV120 Features

Dell PowerEdge R210 (Or equivalent)
Intel Xenon Processor
2GB Ram
250GB Hard Drive
Windows Server 2012 R2 Standard Edition
Mouse & Keyboard Included
Mounting Rails Not Included

RAID Storage System (PV111, PV112 & PV121 Only)

IBM System x3200 M2 4368-K8G (Or equivalent)
Intel Xenon Quad-Core X3330 / 2.66GHz Processor
2GB Ram
6MB Cache Memory - Level 3
RAID 0, RAID 1

UPS (PV112 Only)

865 Watts / 1500 VA Maximum Configurable Power / Output Power Capacity
Maintenance-free sealed battery
8 Hour Typical Recharge Time Typical

Important

All wiring must be carried out by a qualified electrician in accordance with the current edition of the wiring regulations and any applicable regional standards

Prolojik maintains a policy of ongoing improvement, and the information herein is subject to change without notice