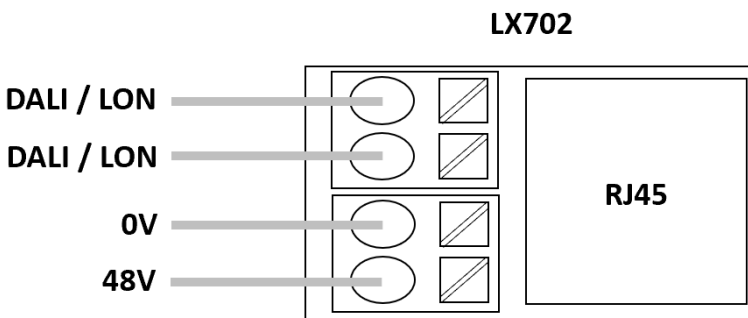
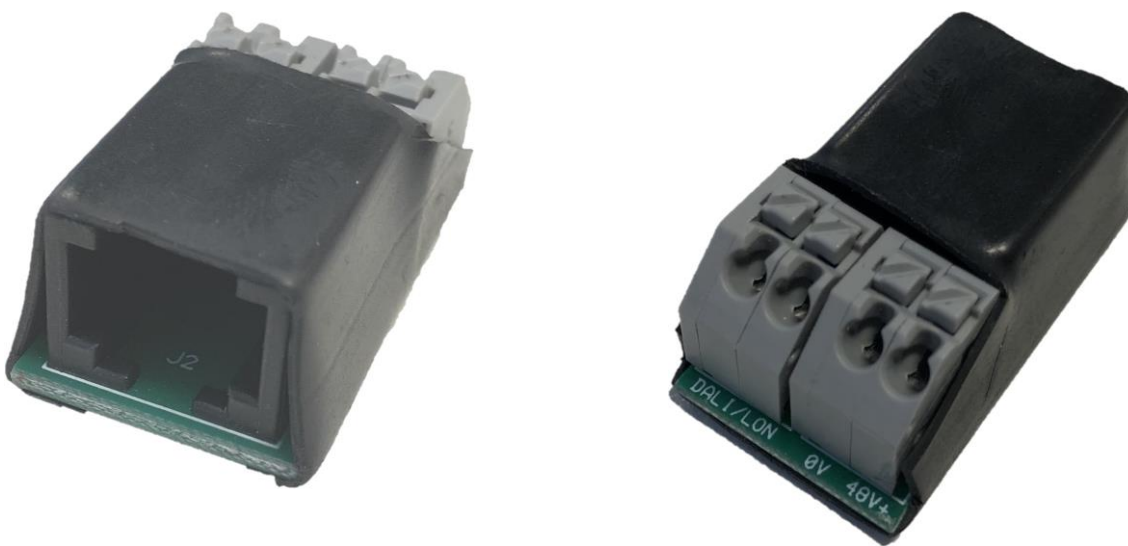


## LX702

The LX702 is a connector interface unit to allow the connection of LX PoE to DALI or LON peripherals, like PS432 sensors and PC664 scene plates. Designed for operation with the Prolojik LightMatrix™ architecture. The LX702 connects via a single CAT5e or 6 cable to provide network control over a SELV structured cabling architecture.

### Key Features:

- PoE RJ45 connection
- DALI and LON connections
- Miniature design
- Expands connection of Prolojik products



RJ45 8x8 TERMINATED CABLE  
COMPLIANT TO T568A OR T568B

ENSURE THAT ALL MANUALLY  
TERMINATED CABLES ARE PRE-TESTED  
FOR COMPLIANCE TP T568A OR T568B  
PRIOR TO TERMINATION TO ACTIVE  
EQUIPMENT

The wiring can be in stranded wires with ferrules or solid with a cross section of 0.2–1.5 mm<sup>2</sup>.

Strip 8.5–9.5 mm of insulation from the cables to ensure perfect operation of the push-wire terminals.

Use one wire for each terminal connector only.

